

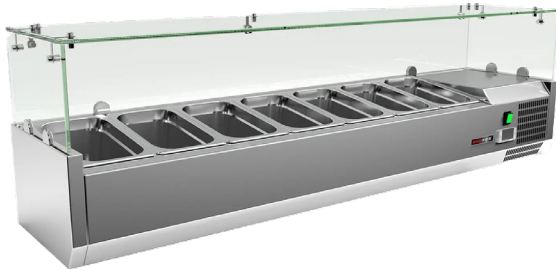
Technical data sheet



Product features

Cooling display 7x GN 1/4

| | | |
|--------------|----------------------------------|-----------------------------|
| Model | SAP Code | 00013358 |
| MCH 4150 | A group of articles - web | Cooling and freezing tables |



- Material: Stainless steel
- GN / EN size in device: GN 1/4
- Number of GN / EN: 7
- Minimum device temperature [°C]: 2
- Maximum device temperature [°C]: 8
- Insulation thickness [mm]: 40
- Unit: Right
- Automatic defrost: Yes

| | | | |
|----------------------------|--------------------|--|--------|
| SAP Code | 00013358 | Number of GN / EN | 7 |
| Net Width [mm] | 1500 | GN / EN size in device | GN 1/4 |
| Net Depth [mm] | 335 | GN device depth | 150 |
| Net Height [mm] | 440 | Minimum device temperature [°C] | 2 |
| Net Weight [kg] | 44.00 | Maximum device temperature [°C] | 8 |
| Power electric [kW] | 0.125 | Refrigerant | R290 |
| Loading | 230 V / 1N - 50 Hz | Refrigerant weight [g] | 33.00 |
| Chamber volume [l] | 43 | Climate class | 4 |

Technical data sheet

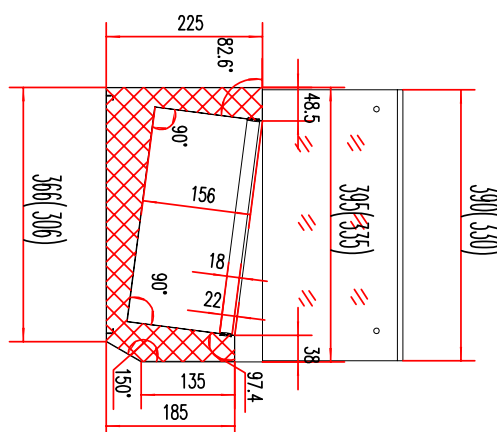
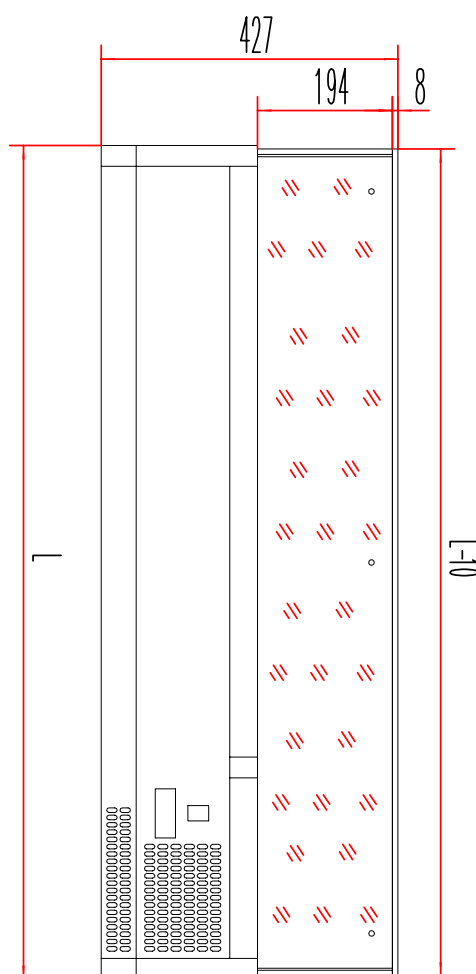


Technical drawing

Cooling display 7x GN 1/4

| | | |
|--------------|----------------------------------|-----------------------------|
| Model | SAP Code | 00013358 |
| MCH 4150 | A group of articles - web | Cooling and freezing tables |

| | |
|-----------------|------|
| MCH3120/MCH4120 | 1200 |
| MCH3140/MCH4140 | 1400 |
| MCH3150/MCH4150 | 1500 |
| MCH3160/MCH4160 | 1600 |
| MCH3180/MCH4180 | 1800 |
| MCH4200 | 2000 |



Technical data sheet



Technical parameters

Cooling display 7x GN 1/4

| | | |
|-----------------|----------------------------------|-----------------------------|
| Model | SAP Code | 00013358 |
| MCH 4150 | A group of articles - web | Cooling and freezing tables |

1. SAP Code:

00013358

2. Net Width [mm]:

1500

3. Net Depth [mm]:

335

4. Net Height [mm]:

440

5. Net Weight [kg]:

44.00

6. Gross Width [mm]:

1590

7. Gross depth [mm]:

375

8. Gross Height [mm]:

310

9. Gross Weight [kg]:

49.00

10. Device type:

Electric unit

11. Power electric [kW]:

0.125

12. Loading:

230 V / 1N - 50 Hz

13. Refrigerant:

R290

14. Material:

Stainless steel

15. Exterior color of the device:

Stainless steel

16. Additional information:

GN are not included

17. Device properties 2:

Cooling

18. GN / EN size in device:

GN 1/4

19. Number of internal parts:

7

20. Number of GN / EN:

7

21. GN device depth:

150

22. Chamber volume [l]:

43

23. Insulation thickness [mm]:

40

24. Unit:

Right

25. Minimum device temperature [°C]:

2

26. Maximum device temperature [°C]:

8

27. Automatic defrost:

Yes

28. Refrigerant weight [g]:

33.00

Technical data sheet



Technical parameters

Cooling display 7x GN 1/4

| | | |
|--------------|----------------------------------|-----------------------------|
| Model | SAP Code | 00013358 |
| MCH 4150 | A group of articles - web | Cooling and freezing tables |

29. Gross Volume [m3]:

0.185

31. Climate class:

4

30. Net Volume [m3]:

0.221

32. Cross-section of conductors CU [mm²]:

0,5